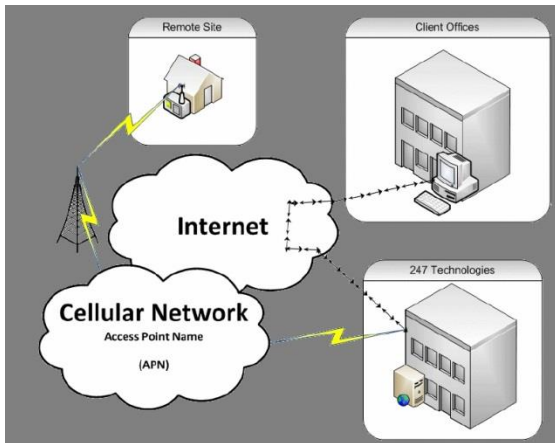




# Access Control and Time & Attendance Solutions [WWW.SABREBIOMETRICS.COM](http://WWW.SABREBIOMETRICS.COM)

## Someone who needs a Sabre Cloud – Advanced Data Management Services



### What is Sabre Cloud ?

Collect the clocking data from remote biometric hardware devices directly, real-time. Without any complex port-forwarding and any other hardware required on-site. Use any internet service on site (3G, GPRS, ADLS, Dial-up, WiFi, Neotel etc). The most reliable method of data collection!!

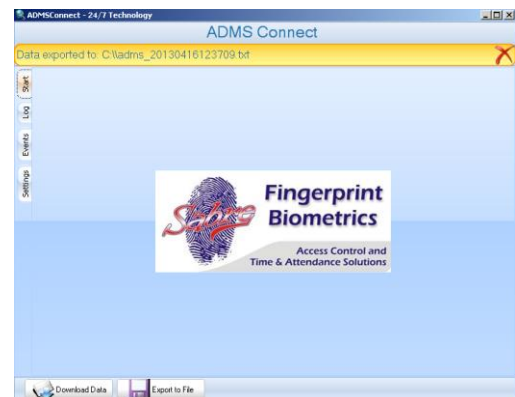
- This solution can exclude the need for the standard Sabre T&A software which is charged in addition to Cloud.
- The Cloud solution together with any other software package such as Easy Roster, Smart Payroll and S.A.P. etc. is also available.
- Ideal product for any 3<sup>rd</sup> party solution with a DIY integration directly into any other program.
- Also compatible with all other time and attendance software packages.

### Sabre Time & Attendance and Sabre Payroll integration via the Cloud

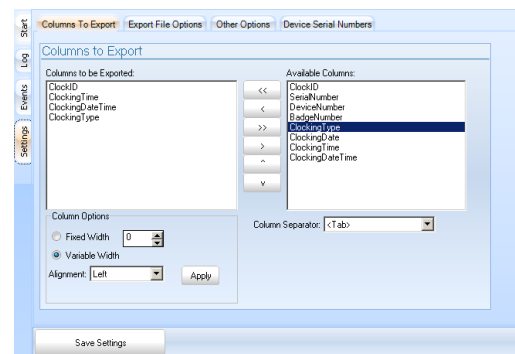
- Built-in Cloud module. Simply configure your Sabre software to collect data from the Cloud server.
- Only additional cost to existing Sabre clients is R 1 per employee per month for data collection services.

### Stand-alone Sabre Cloud Connect

- Neither registration fee, nor an upfront software cost to clients.
- Port-fee only R 100 per device per month, plus only R 1 per employee per month.



- Run Cloud Connect in the system tray, hidden as a service.





# Access Control and Time & Attendance Solutions

## WWW.SABREBIOMETRICS.COM

- Configure it to use any file format required with easy to use customisable interface capability.

```

[DoOnStartup] Connecting to ADMS Server
[DoOnStartup] Loading settings
Settings have been saved
[DownloadData] Starting
[DownloadData] Device: Test Device | Serial: 3503061490010 | DeviceID: 01
[DownloadDataForSerial] Starting for: 3503061490010
[DownloadDataForSerial] Found 0 rows
-----
[DownloadData] Complete
[CreateEvent] Creating event: Data Downloaded
Settings have been saved
[DownloadData] Starting
[DownloadData] Device: Test Device | Serial: 3503061490010 | DeviceID: 01
[DownloadDataForSerial] Starting for: 3503061490010
[DownloadDataForSerial] Found 0 rows
-----
[DownloadData] Complete
[CreateEvent] Creating event: Data Downloaded
Settings have been saved
[DownloadData] Starting
[DownloadData] Device: Test Device | Serial: 3503061490010 | DeviceID: 01
[DownloadDataForSerial] Starting for: 3503061490010
[DownloadDataForSerial] Found 154 rows
[DownloadDataForSerial] Inserting Local Data
  
```

- Download from as many devices as required, with customised description and device number fields.

Timestamp	Event Type	Event Message
16/04/2013 12:37:10...	EXPORT	Data exported to: C:\adms_20130416123703.txt [ID: 0 -> 16219]
16/04/2013 12:37:08...	DOWNLOAD	Data Downloaded
16/04/2013 12:36:18...	DOWNLOAD	Data Downloaded
16/04/2013 12:35:51...	DOWNLOAD	Data Downloaded
16/04/2013 12:35:41...	DOWNLOAD	Data Downloaded
16/04/2013 12:34:52...	INFO	Starting application
16/04/2013 12:34:27...	DOWNLOAD	Data Downloaded
16/04/2013 12:34:02...	INFO	Starting application
16/04/2013 12:25:53...	INFO	Starting application

- Full history and reporting management of system

- Select placement of extracted data and select, overwrite or append the last file written.

- Other options related to file name, frequency of data collection and server settings.

### Client reference letters

<http://www.sabrebiometrics.com/documents.html>

### Hardware brochures

<http://www.sabrebiometrics.com/brochures.html>

### Contact details

See [www.SabreBiometrics.com](http://www.SabreBiometrics.com)

E-Mail [sales@247technologies.co.za](mailto:sales@247technologies.co.za)

Call 086 1101738

For Sabre terms and conditions

<http://www.sabrebiometrics.com/terms.html>

