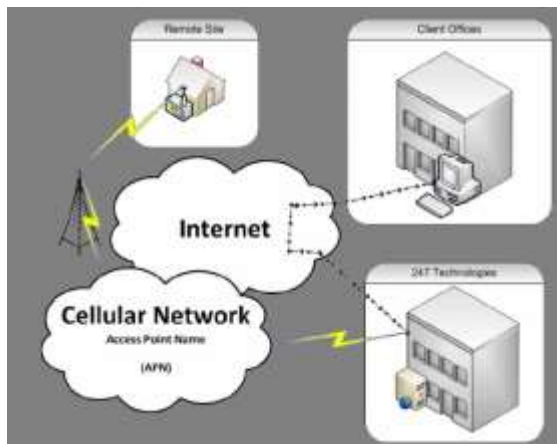




Access Control and Time & Attendance Solutions

WWW.SABREBIOMETRICS.COM

Sabre ADMS – Advanced Data Management Services



What is ADMS ?

Collect the clocking data from remote biometric hardware devices directly, real-time. Without any complex port-forwarding and any other hardware required on-site. Use any internet service on site (3G, GPRS, ADSL, Dial-up, WiFi, Neotel etc). The most reliable method of data collection!!

- This solution can exclude the need for the standard Sabre T&A software which is charged in addition to ADMS.
- The ADMS solution together with any other software package such as Easy Roster, Smart Payroll and S.A.P. etc. is also available.
- Ideal product for any 3rd party solution with a DIY integration directly into any other program.
- Also compatible with all other time and attendance software packages.

Sabre Time & Attendance and Sabre Payroll integration via the ADMS

- Built-in ADMS module. Simply configure your Sabre software to collect data from the ADMS server.
- Only additional cost to existing Sabre clients is R 1 per employee per month for data collection services.

Stand-alone Sabre ADMS Connect

- Neither registration fee, nor an upfront software cost to clients.
- Port-fee only R 100 per device per month, plus only R 1 per employee per month.



- Run ADMS Connect in the system tray, hidden as a service.





Access Control and Time & Attendance Solutions

WWW.SABREBIOMETRICS.COM

- Configure it to use any file format required with easy to use customisable interface capability.

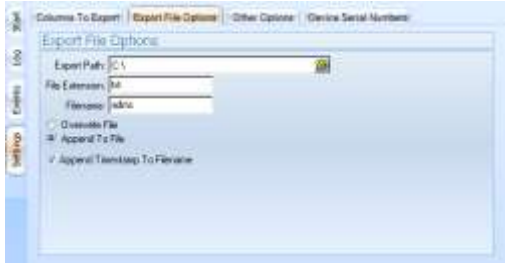
```

[DoceStartup] Connecting to AMS Server
[DoceStartup] Loading settings
Settings have been saved
[DownloadData] Starting
[DownloadData] Device: Test Device ( Serial: 3501061400010 | DeviceID: 01
[DownloadDataForSerial] Starting for: 3501061400010
[DownloadDataForSerial] Found 0 rows
-----
[DownloadData] Complete
[CreateEvent] Creating event: Data Downloaded
Settings have been saved
[DownloadData] Starting
[DownloadData] Device: Test Device ( Serial: 3501061400010 | DeviceID: 01
[DownloadDataForSerial] Starting for: 3501061400010
[DownloadDataForSerial] Found 0 rows
-----
[DownloadData] Complete
[CreateEvent] Creating event: Data Downloaded
Settings have been saved
[DownloadData] Starting
[DownloadData] Device: Test Device ( Serial: 3501061400010 | DeviceID: 01
[DownloadDataForSerial] Starting for: 3501061400010
[DownloadDataForSerial] Found 134 rows
[DownloadDataForSerial] Inserting Local Data
  
```

-

Timestamp	Event Type	Event Message
16/04/2013 12:37:16	DDPDT	Data reported to C:\ado_20130412\70804 (D: P - 16213)
16/04/2013 12:37:08	DDMLOAD	Data Downloaded
16/04/2013 12:36:18	DDMLOAD	Data Downloaded
16/04/2013 12:36:51	DDMLOAD	Data Downloaded
16/04/2013 12:36:41	DDMLOAD	Data Downloaded
16/04/2013 12:36:02	INFO	Starting application
16/04/2013 12:36:07	DDMLOAD	Data Downloaded
16/04/2013 12:36:02	INFO	Starting application
16/04/2013 12:25:59	INFO	Starting application

- Full history and reporting management of system



-
- Select placement of extracted data and select, overwrite or append the last file written.



-
- Other options related to file name, frequency of data collection and server settings.



-
- Download from as many devices as required, with customised description and device number fields.

Client reference letters

<http://www.sabrebiometrics.com/documents.html>

Hardware brochures

<http://www.sabrebiometrics.com/brochures.html>

Contact details

See www.SabreBiometrics.com

E-Mail sales@247technologies.co.za

Call 086 1101738

For Sabre terms and conditions

<http://www.sabrebiometrics.com/terms.html>

